

Renting The Mathey Center

Are you looking for a unique and beautiful location for your next event or meeting? The Mathey Center for People and Nature offers a beautiful rural setting, blended with state-of-the-art technology, to give you a truly memorable venue.

Features and Amenities

- Beautiful setting on a historic farm
- Trails for outdoor enjoyment passing through fields, forests, and alongside a 40-acre beaver pond
- Modern, new high-performance, ADA compliant building
- Plug-and-play video conferencing equipment in meeting rooms
- Access to kitchen
- Solar powered, net zero building
- Guest Wifi included
- Donation-based EV Charging (4 vehicles)
- Conveniently located between Manchester and Portsmouth: 2.9 miles from Route 101/Route 125 interchange and 6.9 miles from Lee Traffic Circle (Route 4/Route 125)



Important Information

- The building's regular hours are 9:00 am to 5:00 pm
- Set up and clean-up will be the client's responsibility
- Caterers are client's choice
- If alcohol is served, need liquor license and insurance naming SELT as additional insured at \$2 million level



After Hours Rentals

After hours access is possible depending on the size and type of the event. In the case of an after hours event, the client will receive a FOB and a pre-rental site visit will be required, and there will be an increase in the security deposit.

Learn more
and sign up!



 **SELT** Learn more and sign up at seltnh.org/rentals

Pratt Family Community Room

- Layout options include:
 - Theater Style (50 people)
 - U-Shaped with Tables (30 people)
 - Lecture Style with Tables (30 people)
 - Custom
- LCD projector with automatic drop-down screen (113" diagonal)
- Microphone (wireless and wired) with speaker system and Bluetooth connectivity
- White Board (rolling)
- Access to patio
- Includes use of adjacent Hive Meeting Room, offering break out space and/or location to serve buffet for meals
- Includes access to kitchen, with oven, microwave, toaster oven, toaster, coffee maker, refrigerator, and dishwasher

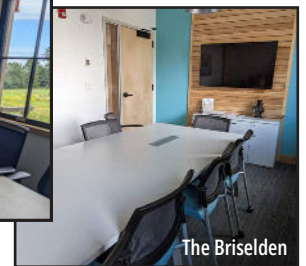
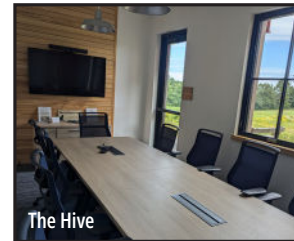


Rental Rate	Private/ Business	Nonprofit
Hourly (2 hr. min)	\$150/hr	\$75/hr
Half day	\$450	\$225
Full day	\$900	\$450

The Hive Meeting Room

- Meeting room for up to 10 with powered /wired table
- 55" 4K UHD Sony smart LED TV
- Private access/exclusive use of outside "Flight Deck," SELT's private and immediately-adjacent outdoor deck
- Conveniently located immediately across from SELT's kitchen

**Cannot be rented separately when Pratt Family Community Room is rented*



Rental Rate	Private/ Business	Nonprofit
Hourly (2 hr. min)	\$75/hr	\$40/hr
Half day	\$225	\$115
Full day	\$450	\$225

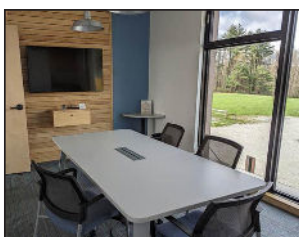
The Briselden Meeting Room

- Meeting room for up to 10 with powered /wired table
- 55" 4K UHD Sony Smart LED TV

**Not available for evenings, unless staff present*

Founders' Meeting Room

- Second floor (elevator accessible)
- Meeting room for up to 6 with powered/wired table
- 55" 4K UHD Sony smart LED TV
- Includes small sink, room for coffee/tea service and refreshments



Rental Rate	Private/ Business	Nonprofit
Hourly (2 hr. min)	\$65/hr	\$35/hr
Half day	\$200	\$100
Full day	\$400	\$200

Discounted Rates

Nonprofits receive a ~50% discount. If your nonprofit cannot afford these rates, please contact us to discuss what may be possible.

Epping-based community organizations can receive one free 2-hour meeting a month, depending on availability. Such organizations include Epping-based community non-profits, civic organizations, and Town committees.

Package discounts are available to rent multiple rooms at once or to have repeat events on a regular schedule.

