



# SELT

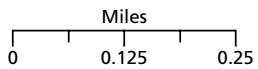
## Southeast Land Trust of New Hampshire

### Harvey's Kennard Hill Forest

Privately owned with trail system maintained by SELT

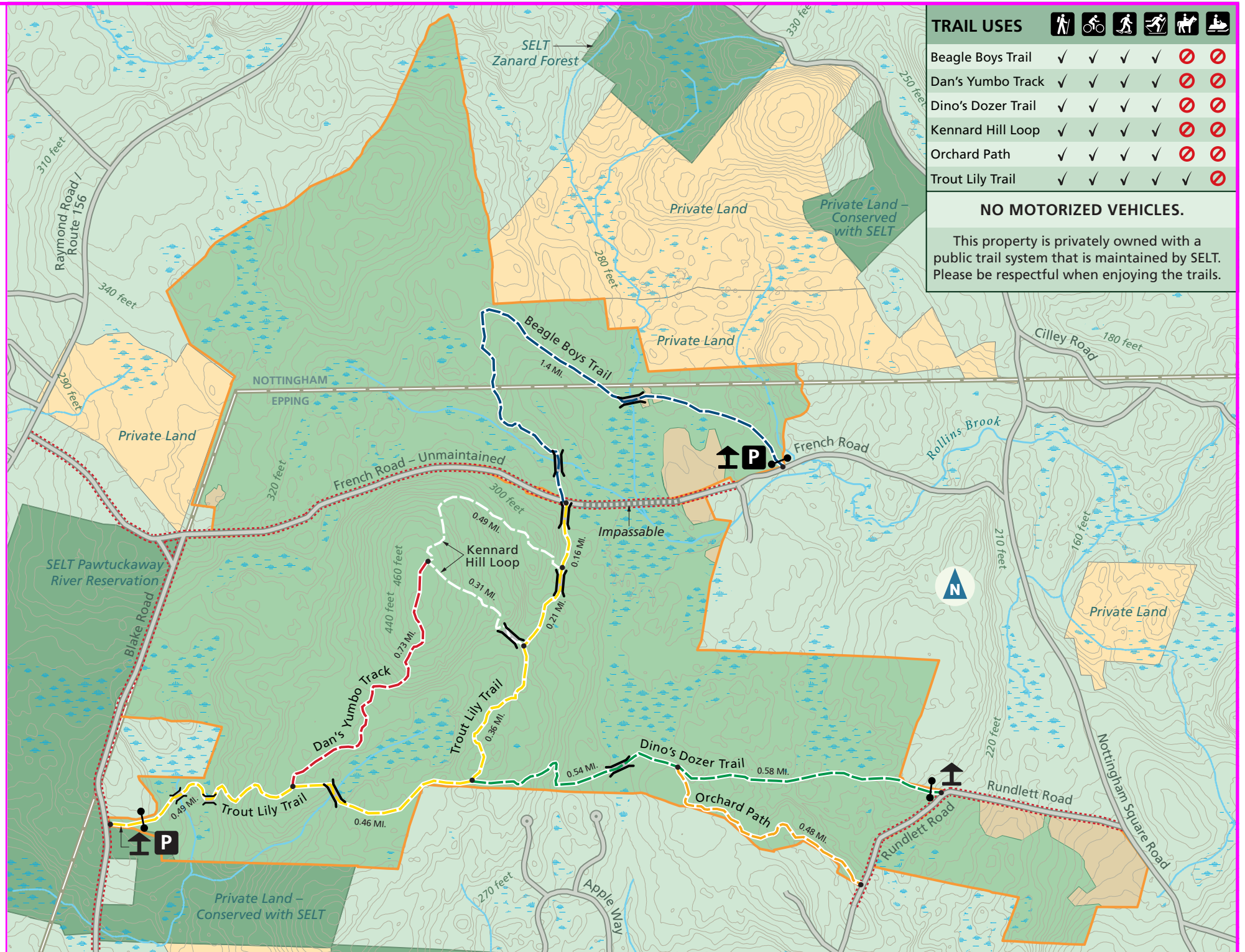
Epping & Nottingham  
1,131 acres

- Harvey's Kennard Hill Forest
- Other SELT Conservation Lands
- Other Conservation Lands
- Field and Clearing
- Forest
- Wetland
- Stream
- Intermittent Stream
- Trails
- Trail Junction/ Mileage between 0.5 MI.
- Unmaintained Roads
- Roads
- Town Boundary
- Parking
- Kiosk
- Gate
- Bridge
- Contour Lines



Boundaries & features are approximate.

Source: Southeast Land Trust of New Hampshire 2024



TRAIL USES						
Beagle Boys Trail	✓	✓	✓	✓	✗	✗
Dan's Yumbo Track	✓	✓	✓	✓	✗	✗
Dino's Dozer Trail	✓	✓	✓	✓	✗	✗
Kennard Hill Loop	✓	✓	✓	✓	✗	✗
Orchard Path	✓	✓	✓	✓	✗	✗
Trout Lily Trail	✓	✓	✓	✓	✓	✗

### NO MOTORIZED VEHICLES.

This property is privately owned with a public trail system that is maintained by SELT. Please be respectful when enjoying the trails.