

# HARVEY'S KENNARD HILL FOREST



## TRAIL GUIDE



### Trailheads and Parking

French Road and Blake Road  
(Epping, NH)

1,131 acres • 6.21 miles of trails



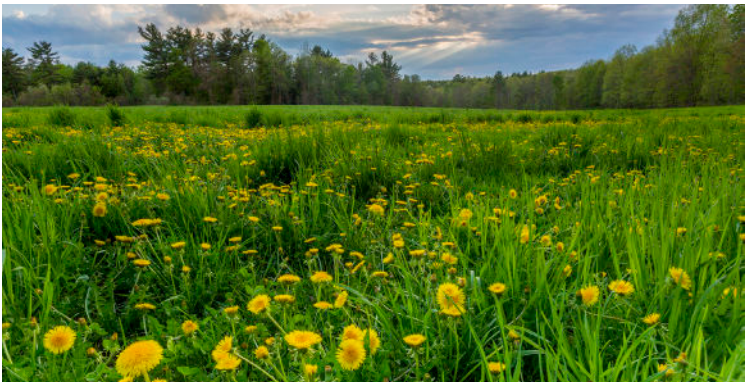
# An Epic, Connected Landscape

In 2015, SELT worked with the Harvey family to conserve 1,114 acres of the family's land in the rural northwest corner of Epping and southern Nottingham. This land is a key parcel in SELT's larger vision of connecting Pawtuckaway State Park to Great Bay through a corridor of conservation lands and trails.

Harvey's Kennard Hill Forest is big unto itself, but lies within a larger landscape of nearly 5,000 acres of unfragmented lands. This primarily hemlock-hardwood-pine forest intermingled with beaver ponds and wetlands filters clean water to the north and Pawtuckaway River, and tributaries to the Wild and Scenic Lamprey River. And the broad landscape is recognized statewide for its high-quality habitat supporting common and uncommon species, from great blue herons to bobcat.

The forest remains private property, owned by the Harvey family and is permanently protected by a conservation easement held by SELT and NH Fish and Game. This land is well-regarded by hunters and cross-country skiers. Thanks to the Harvey family's willingness to allow for a public trail system maintained by SELT, the greater public can enjoy the land through the trails that wind through the woods.

And for those looking for an epic adventure, Harvey's Kennard Hill Forest sits adjacent to 800+ acres of SELT-owned land, so outdoor enthusiasts can explore the forests, fields, and wetlands along the Pawtuckaway River.



# Trail Descriptions

## ● **Beagle Boys Trail (Easy) 1.4 mi.**

This trail mainly follows an old woods road from the parking area on French Road across the top of a large beaver pond and around a hillside and drainage. Trail is level and grades are mild in either direction, passes through several different forest types and old clearings.

## ● **Trout Lily Trail (Moderate) 1.68 mi.**

Following along below the beaver ponds in the southwest of the property, this trail climbs up through a glacial erratic feature and traverses the southern forest to the middle of the property. The trail then turns north and follows the edges of wildlife clearings up to French Road. Rated for horses, this is a great trail for wildlife viewing as well.

## ○ **Kennard Hill Loop (Hard) 0.80 mi.**

This trail has the most elevation gain and loss on the property, leaving on either end from Trout Lily and climbing to the top of Kennard Hill, the highest point in Epping. Cut to follow the contours of the land, the climb is moderate but sustained in both directions, passing through a wildlife opening on the southern leg.

## ● **Dan's Yumbo Track (Moderate) 0.73 mi.**

Named for Dan Harvey's excavator "Yumbo," this trail climbs from old fields up the back of Kennard Hill to the top. Passes through several forest types and wildlife openings- see if you can spot the grill in the old picnic spot!

## ● **Dino's Dozer Trail (Easy) 1.12 mi.**

Named for neighbor Dino's bulldozer that was used to clear parts of the old road, this trail is mainly a logging road until the wildlife opening near the base of Kennard Hill. Passing through many clearings, landings, and by several wetlands, this is a great opportunity to see some friendly fauna.

## ● **Orchard Path (Moderate) 0.48 mi.**

Half old logging road and half newly cut trail, this trail allows folks to access the system from Dearborn Road without having to cross through the massive wet areas on the Class VI portion of the road. Mostly flat and level, there is one steep climb in the old road section.

# Enjoy the Trails!

Harvey's Kennard Hill Forest is managed by SELT and is open for public enjoyment. Please follow these visitation guidelines:

- Carry out what you carry in.
- Leave things where and as you find them – no cairns, rock art.
- Stay on marked trails, respect designated trail uses and prohibitions and use only designated trailhead parking.
- Respect wildlife.
- Respect other users of the trails and our neighbors.
- Control your dog(s). Be aware where they may be required to be on leash or any areas they may not be allowed.
- Hunting is allowed on most SELT lands. Be aware of hunting season and wear blaze orange for your own safety.

The following uses are not permitted:

- Camping
- Fires
- Target Shooting
- Trapping
- Wheeled motorized vehicles

## About SELT

The Southeast Land Trust of New Hampshire is a membership-based, nonprofit whose mission is to protect and sustain the significant lands in our communities for clean water, outdoor recreation, fresh food, wildlife, and healthy forests.

**Join as a member or volunteer today!**



Learn more about this land!

**Tap or scan here!**



**[seltnh.org](http://seltnh.org) • 603-778-6088**



# SELT

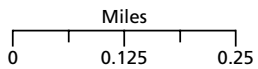
## Southeast Land Trust of New Hampshire

### Harvey's Kennard Hill Forest

Privately owned with trail system maintained by SELT

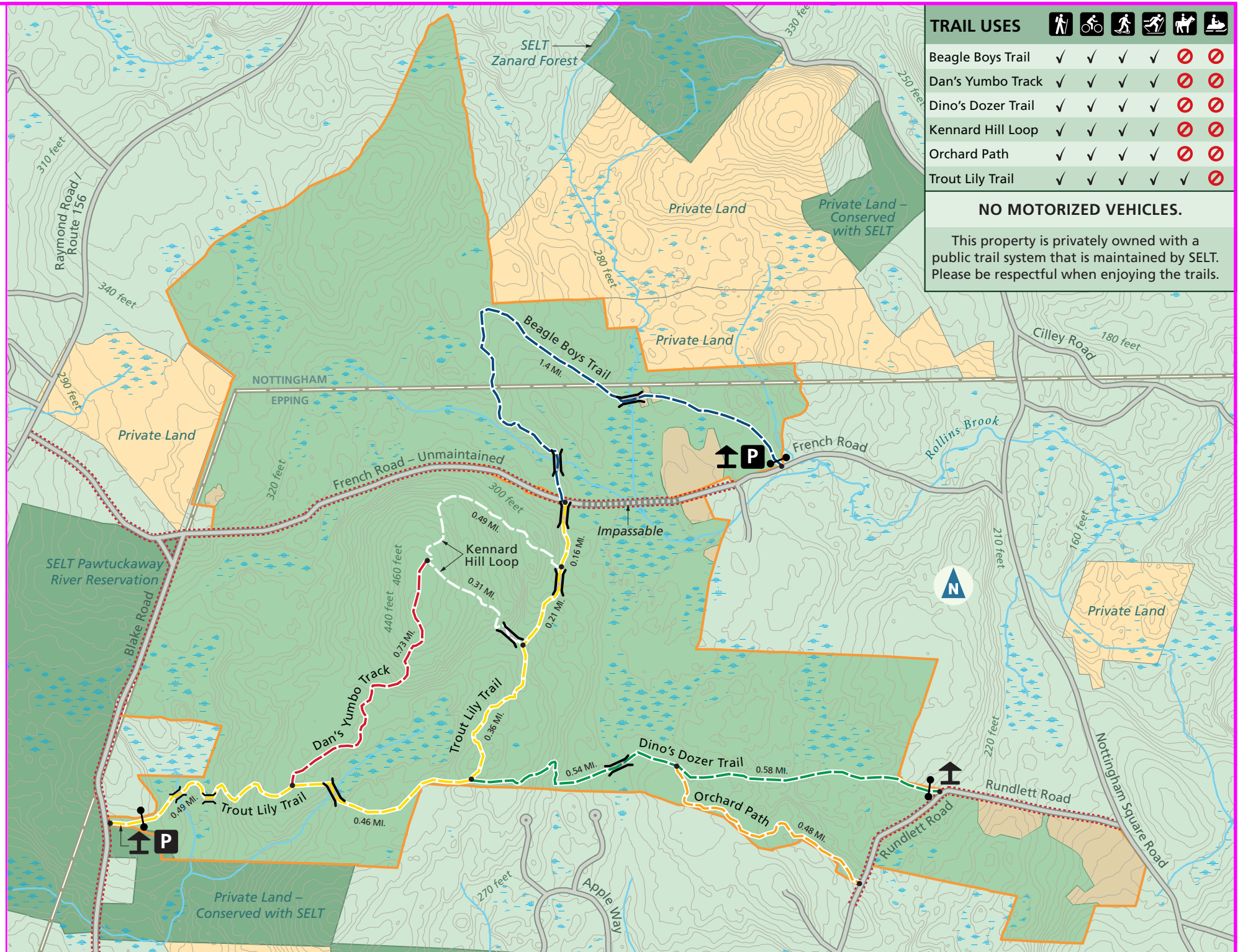
Epping & Nottingham  
1,131 acres

- Harvey's Kennard Hill Forest
- Other SELT Conservation Lands
- Other Conservation Lands
- Field and Clearing
- Forest
- Wetland
- Stream
- Intermittent Stream
- Trails
- Trail Junction/  
Mileage between  0.5 MI.
- Unmaintained Roads
- Roads
- Town Boundary
- Parking P
- Kiosk ↑
- Gate ⋮
- Bridge ⋈
- Contour Lines  10 feet



Boundaries & features are approximate.

Source: Southeast Land Trust of New Hampshire 2024



TRAIL USES						
Beagle Boys Trail	✓	✓	✓	✓	✗	✗
Dan's Yumbo Track	✓	✓	✓	✓	✗	✗
Dino's Dozer Trail	✓	✓	✓	✓	✗	✗
Kennard Hill Loop	✓	✓	✓	✓	✗	✗
Orchard Path	✓	✓	✓	✓	✗	✗
Trout Lily Trail	✓	✓	✓	✓	✓	✗

### NO MOTORIZED VEHICLES.

This property is privately owned with a public trail system that is maintained by SELT. Please be respectful when enjoying the trails.