

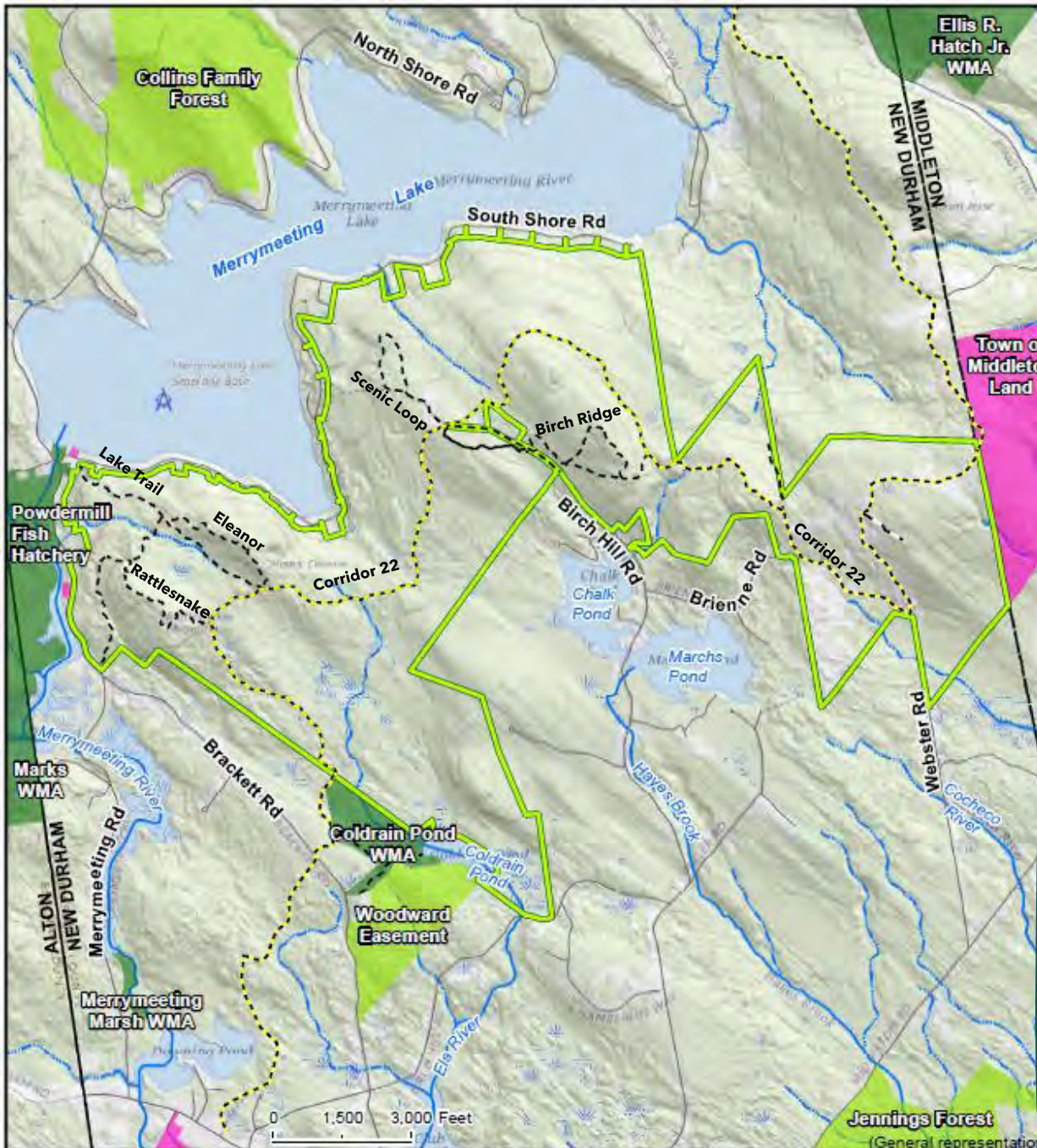
SELT  
BRCF Management  
Committee

October 20, 2021

# Updates

- MMRG
- Powder Mill Snowmobile Club
- Action Items from 9/2021 minutes
- 2021 Budget

# Horses – Feedback from Trail Ride



Birch Ridge Community Forest Trails





# 2022 – Work Plan & Budget

## Property Access & Infrastructure

- Identify additional public access
  - Finalize the design for the All Access Trail and explore funding opportunities for installation
  - Explore/determine access point from South Shore Road and determine a timeline for installation
- Evaluate the cabin and need for other public amenities
  - Determine appropriate public and management uses for the cabin that are consistent with community needs, SELT's programmatic needs, SELT policies and funding sources
  - Assess the current condition for the cabin to support desired uses
  - Determine the need and approach for providing sanitary facilities

# 2022 – Work Plan & Budget

## Recreation and Public Uses

- Finish any needed work on Birch Ridge loop
- Construct re-route of Camp Pride trail
- Determine locations and use of additional trails
  - Finalize the design for the All Access Trail and explore funding opportunities for installation
- Maintain cooperative working relationship with Powder Mill Snowmobile club
  - Assess post-winter trail conditions with club and identify annual work
  - Evaluate status of temporary trails and determine necessary adjustments
  - Review agreement (to be in place for winter 2021/2022) with Club governing use and responsibilities

# 2022 – Work Plan & Budget

## Education and Outreach

- Education and Outreach by core partners
- 4-6 programs annually conducted by SELT and MMRG
- Formalize Outreach working group to:
  - Assemble list of potential partnering organizations
  - Determine efficient and cost-effective approaches to engaging partners
- Determine policies and procedures for group activities
  - Review policies and procedures that apply to other SELT properties
  - Management Committee recommends a course of action to SELT

# 2022 – Work Plan & Budget

## Scenic Views

- Identify locations to establish and maintain scenic views along trails
  - Maintain/create scenic views in conjunction with forestry and wildlife habitat work

# 2022 – Work Plan & Budget

## Forest Management

- Begin to restore the former blueberry field area
  - Remove standing trees/shrubs by mechanical means
- Determine prescription and carry out silvicultural treatments to improve stocking quality
  - Remove undesirable tree species such as beech through mechanical means to improve stocking quality of desired tree species and create early successional habitat patches in MU1
- Management and monitor condition of log landings
  - Inventory landings that need to be reseeded in future years
  - Mow landings periodically to maintain herbaceous conditions



# 2022 – Work Plan & Budget

## Wildlife Habitat

- Maintain old-field habitat down-slope from the cabin
  - Mow to keep open after September to protect ground nesting birds
- Begin to restore the former blueberry field area
  - Remove standing trees/shrubs by mechanical means
- Management and monitor condition of log landings
  - Inventory landings that need to be reseeded in future years
  - Mow landings periodically to maintain herbaceous conditions
- Determine wildlife management recommendations for MU 1
  - Incorporate wildlife management recommendations to be performed with forest silvicultural work

# 2022 – Work Plan & Budget

## Water Quality

- Assess water quality and habitat conditions of perennial streams
  - Support the existing water quality monitoring occurring on the BRCF
- Identify stream crossings and culvert locations requiring repair or improvement
  - Assess existing infrastructure such as culverts and water bars
  - Maintain infrastructure such as swales and ditches

# 2022 – Work Plan & Budget

## Climate Change Mitigation

- Seek opportunities to achieve connectivity to other conserved forest lands within the region to facilitate plant and animal dispersal and movement

# 2022 – Work Plan & Budget

SELT – Operating budget/Land Management Funds

Short-term Capitol Funds – Start up costs from the acquisition of Stell & Young

NRCS-EQIP – Funds from existing contract

## Birch Ridge Community Forest 2022 Budget

Activity/Code	Expense	Comments	Source of Funds		
			SELT	Short-term Capitol Funds	NRCS-EQIP
5210 - Printing & copying	\$30	2 pages @ \$0.30/ page - 100 trail guides	\$30		
8600 - Property Taxes	\$1,700	based on assumed cost of \$1662 in 2021.	\$1,700		
5531 - Building Maintenance	\$500	Chimney Repair	\$500		
5532 - Mowing & Brush Hogging	\$400	1.5 hrs/month May-Oct around cabin = 9 hrs @ \$45/hr = \$400.	\$400		
	\$675	trails \$45 per/hour 10 miles or trails, in and out (10 wide) \$450; large landing by cabin if doing while mowing trail 5 hours \$ 225	\$675		
	\$315	mow cabin 7 hours both side of stone wall \$315;	\$315		
5533 - Snowplowing	\$375	assume 5 storms @ \$75 each for Merrymeeting Road parking lot	\$375		
5538 - Road Maintenance	\$21,120	EQIP access road contract item 1a;			\$21,120
	\$3,000	Maintenance of Birch Hill Road;	\$3,000		
9412 - Archaeological Services	\$2,000	Phase 1B survey	\$2,000		
9416 - Trail Consultant	*	possible costs for All Access Trail			
9418 - Graphic Designer	\$175	Cathy - map design	\$175		
9445 - Printing	\$320	4 temporary trail maps for kiosks @ \$80 each	\$240	\$80	
9612 - Timber Stand Improvement	\$11,247	NRCS contract item 6a			\$11,247
9618 - Early Succession Habitat	\$44,849	NRCS contract item 3a and 4a			\$44,849
	\$48,120	NRCS contract item 5a	\$25,600		\$22,520
9652 - Parking, Grading and Earthwork	*	possible costs for All Access Trail			
9654 - Trail Construction	\$4,000	assume carry over to finish birch ridge trail if it doesn't get finished in 2021 - need to update at end of October. How to integrate all access trail in this?	\$4,000		
9658 - Signs, Kiosk Panels	\$799	Assumes 1 a panel (225), 1 b panel (250) and shipping (\$24) for the Brienne Rd entrance.; estimate of 10 signs for trail intersections @ \$30 each includes shipping on Stell/Young		\$799	
	\$1,642	estimate of 45 signs for trail intersections @ \$30 each includes shipping on original BRCF	\$1,642		
9659 - Land Management Services	\$800	gate installation at Brienne Rd		\$800	
	*	installation of All Access Trail			
9660 - Lumber and Hardware	\$360	18 sign posts @ \$20 each on original BRCF	\$360		
	\$1,580	Kiosk materials for Brienne Rd; 4 sign posts @ \$20 each on Stell/Young		\$1,580	
	*	possible costs for All Access Trail			
9662 - Gravel, Rock and Other Material	*	possible costs for All Access Trail			
9664 - Gates, Bridges etc	\$1,200	Gate at Brienne Rd		\$1,200	
9668 - Other Miscellaneous					
Total expenses	\$145,207		\$41,012	\$4,459	\$99,736

\* Costs for All Access trail should be known by end of 2021/early 2022 - costs to be covered by fundraising

Note: Budget expenses do not include staff time which 2021 YTD is just over 10 weeks

# Cabin – Beginning discussions

## Review of Results from 2018 Public Visioning Session

- Majority said to keep the cabin (23 out of 27 responses)
- Suggested uses included
  - Classroom
  - Camping
  - Shelter/warming hut
  - Visitor info
  - Storage
- Concerns
  - Liability
  - Maintenance/management
  - Vandalism
  - Sharing of use
- Potential Improvements
  - Addition of one room for classroom
  - Toilets
  - Woodstove
  - Lookout observation deck
  - Kiosk/trail info

## Building Description

- 100' x 100 backland site out of current use
- 0.25 acres
- 12' x 24' footprint

